

Data and potatoes

(some drafts of stories)

- NomenclatureS
- Stories that we could have told
 - Some graphes and stories

Nomenclatures

1. Central Product Classification

2. Définition and classification of commodities

· http://ec.europa.eu/eurostat/ramon/nomenclatures/index.cfm?TargetUrl=LST_NOM&StrGroupCode=CLASSIFIC&StrLanguageCode=EN

3. Classification of production, and of producteurs (size, type of production) <http://eur-lex.europa.eu/legal-content/EN/TXT/HTML/?uri=CELEX:32008R1242&from=EN>

Central Product Classification

0 : Agriculture, forestry and fishery products

01 : Products of agriculture, horticulture and market gardening

015 : Edible roots and tubers with high starch or inulin content

0151 : Potatoes

Définition and classification of commodities

STAT CODE	COMMODITY	DEFINITIONS, COVERAGE, REMARKS
0116	POTATOES <i>Solanum tuberosum</i> Irish potato	A seasonal crop grown in temperate zones all over the world, but primarily in the northern hemisphere.
0117	Flour of Potatoes	Produced from tubers that have been peeled, dried and milled. Includes flour, meal, flakes, granules and pellets.
0118	Frozen Potatoes	Peeled potatoes that are either cooked or uncooked, sliced or unsliced, and then frozen.
0119	Starch of Potatoes	A carbohydrate found in many plant cells. A white odourless powder that is insoluble in cold water, but forms a paste in hot water. Has wide food and non-food uses.
0120	Potato Offals	See Chapter 11 .
0121	Tapioca of Potatoes	A product obtained by heating potato starch mixed with water. Tapioca may be in the form of flakes, grains, pearls, siftings, seeds or other similar forms. Used in the preparation of soups and puddings or in foods for invalids.

DEFINITION OF TYPES OF FARMING

The types of farming are defined by two features:

- (a) The nature of the characteristics concerned

The characteristics refer to the list of characteristics surveyed in the 2010, 2013 and 2016 surveys on the structure of agricultural holdings(..)

- (b) The thresholds determining the class limits

Unless otherwise indicated, these thresholds are expressed as fractions of the total standard output of the holding.

- 1 - Specialist field crops
- 2 - Specialist horticulture
- 3 - Specialist permanent crops
- 4 - Specialist grazing livestock
- 5 - Specialist granivores
- 6 - Mixed cropping
- 7 - Mixed livestock holdings
- 8 - Mixed crops — livestock
- 9 - Non-classified holdings

Type of farming				Definition	Code of characteristics and thresholds
Principal		Particular			
Principal		Particular		Definition	Code of characteristics and thresholds
				General cropping i.e. cereals, dried pulses and protein crops for the production of grain, oilseeds, potatoes, sugar beet, industrial plants, fresh vegetables, melons, strawberries open field, arable land seed and seedlings, other arable land, fallow land and forage for sale > 2/3	P1 > 2/3
15	Specialist cereals, oilseeds and protein crops			Cereals, oilseeds, dried pulses and protein crops > 2/3	P15 + P16 + 2.01.02. > 2/3
		151	Specialist cereals (other than rice) oilseeds and protein crops	Cereals, excluding rice, oilseeds, dried pulses and protein crops > 2/3	P151 + P16 + 2.01.02. > 2/3
		152	Specialist rice	Rice > 2/3	2.01.01.07. > 2/3
		153	Cereals, oilseeds, protein crops and rice combined	Holdings in class 15, excluding those in classes 151 and 152	
16	General field cropping			General cropping > 2/3; cereals, oilseeds, dried pulses and protein crops ≤ 2/3	P15 + P16 + 2.01.02. ≤ 2/3
		161	Specialist root crops	Potatoes, sugar beet and fodder roots and brassicas > 2/3	P17 > 2/3
		162	Cereals, oilseeds, protein crops and root crops combined	Cereals, oilseeds, dried pulses protein crops > 1/3; roots > 1/3	P15 + P16 + 2.01.02. > 1/3; P17 > 1/3
		163	Specialist field vegetables	Fresh vegetables, melons and strawberries open field > 2/3	2.01.07.01.01. > 2/3
		164	Specialist tobacco	Tobacco > 2/3	2.01.06.01. > 2/3
		165	Specialist cotton	Cotton > 2/3	2.01.06.03. > 2/3
		166	Various field crops combined	Holdings in class 16, excluding those in 161, 162, 163, 164 and 165	

P17 : Roots = 2.01.03. (potatoes) + 2.01.04. (sugar beet)
+ 2.01.05. (fodder roots and brassicas)

Possible stories

(that I won't tell, because ... no easy data, or time)

Where could we find the data ?

- Yield of potatoes by varieties
- % of potatoes bio,
- Yield by type of ground...
- historical impact of doryphore (**Colorado potato beetle**) and **potato blight** (mildew) (Potato Famine)
- GMO potatoes (% of production..)
- shade of colors of the flowers of potatoes
- Genotype of different potatoes



Data findable

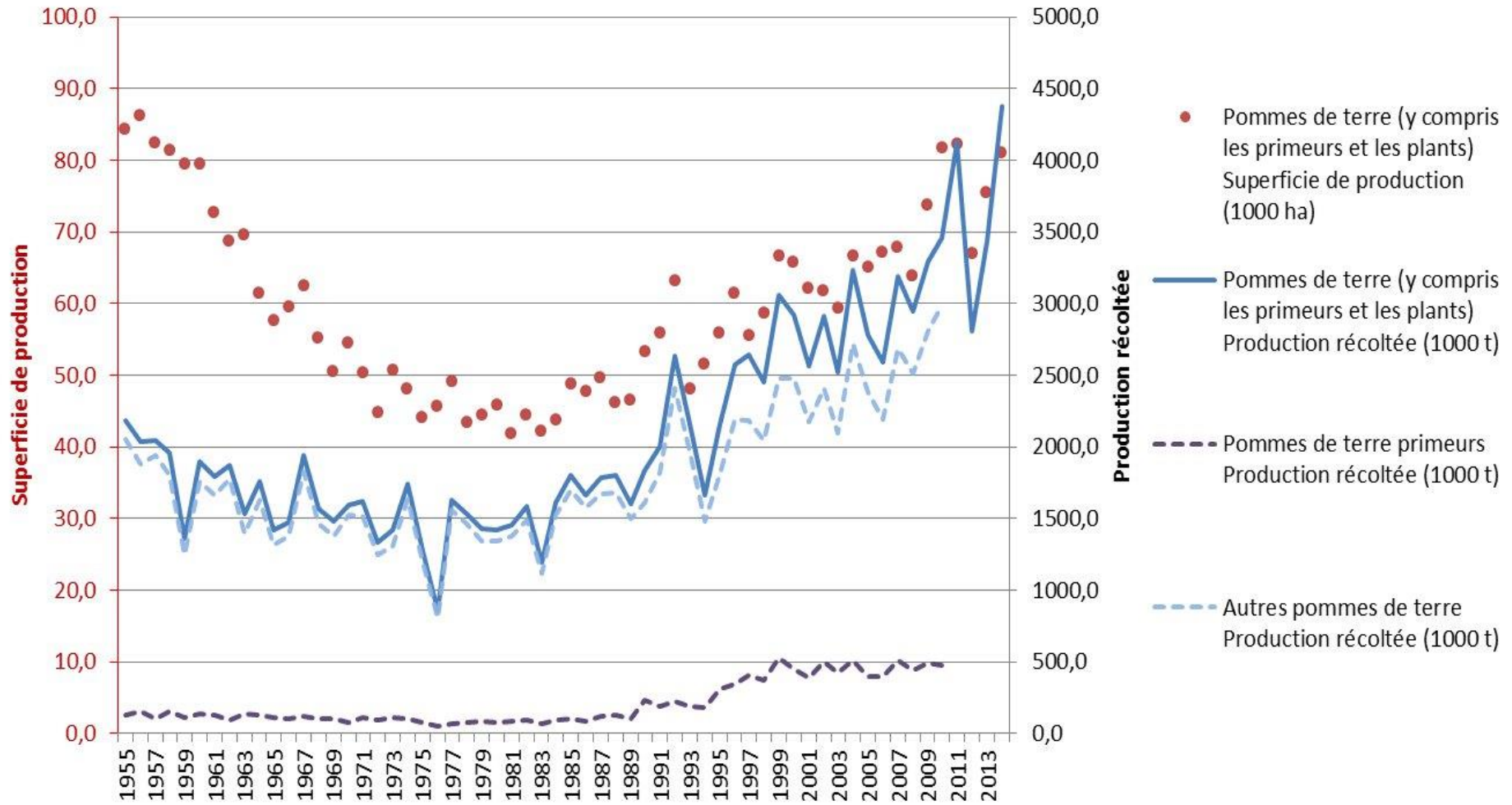
- industrial transformation of potatoes
- Number of holding, size...
- Composition of potatoes (Starch, etc...)
- Size of potatoes



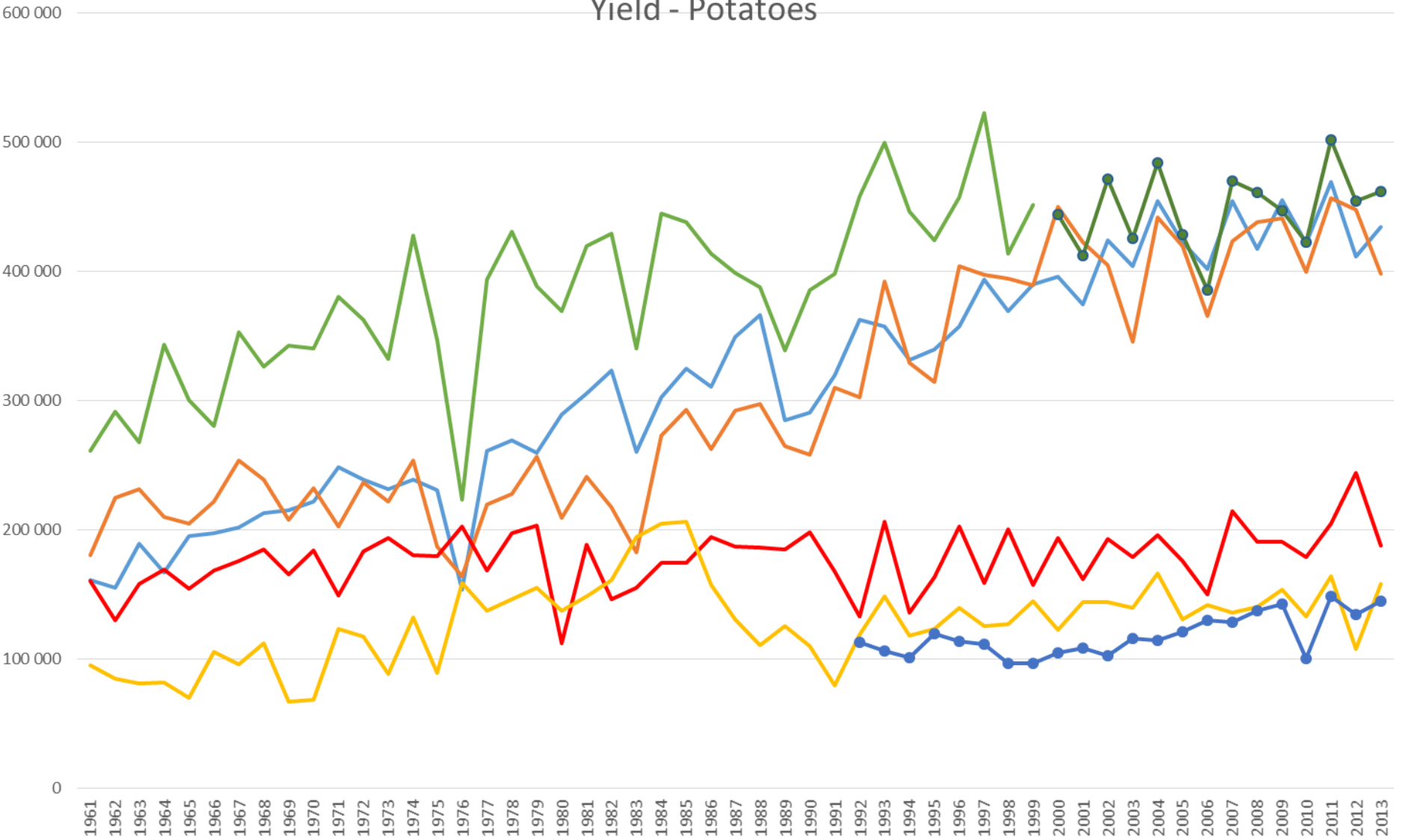
Source and stories

- Eurostat and FAO
- Chronological data (1961-2013)
- Area harvested, yield, Kcal/day/capita,
- Exportation
- European country (Belgium / poland / germany / France, Russian federation)

Patate belgium

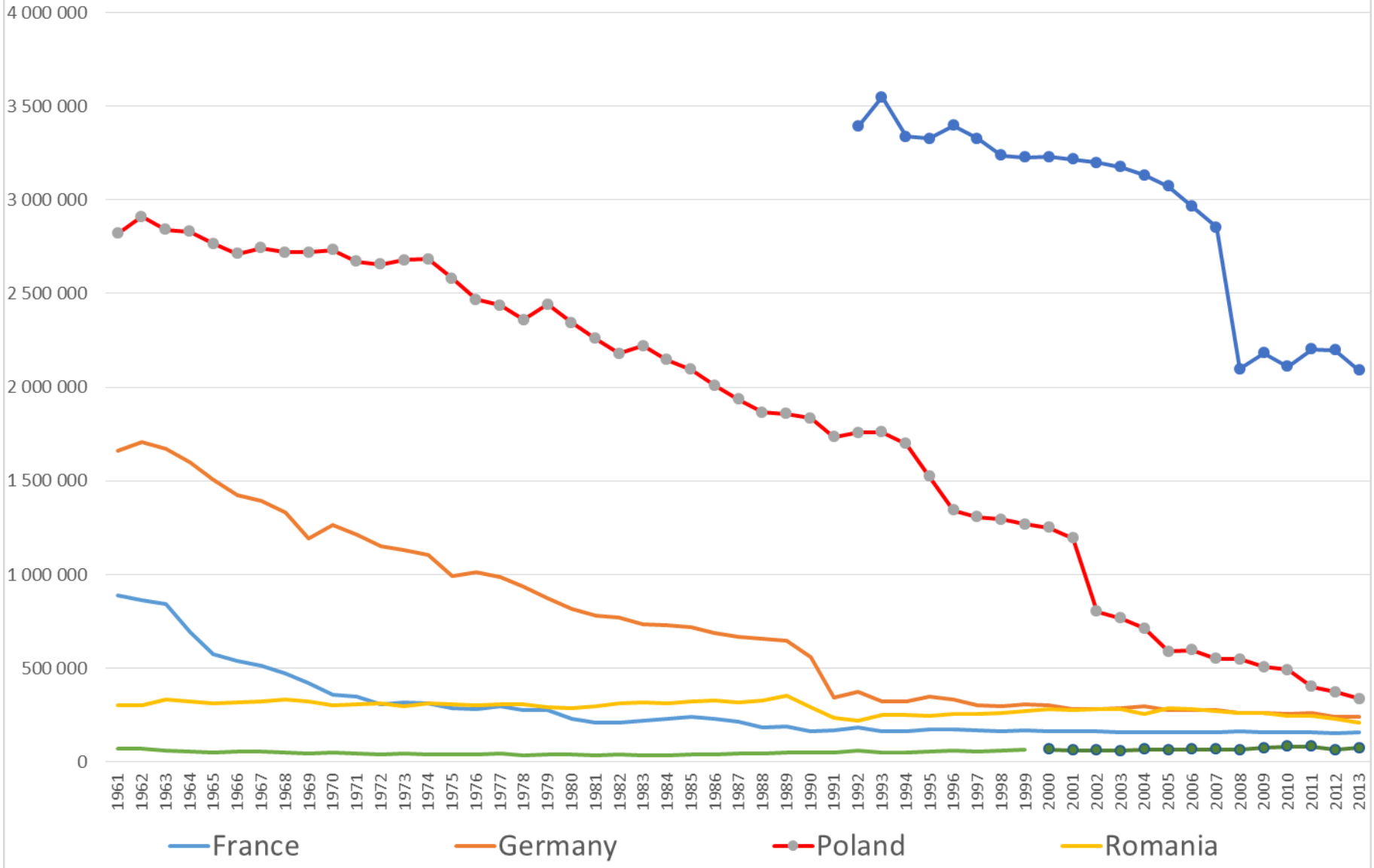


Yield - Potatoes

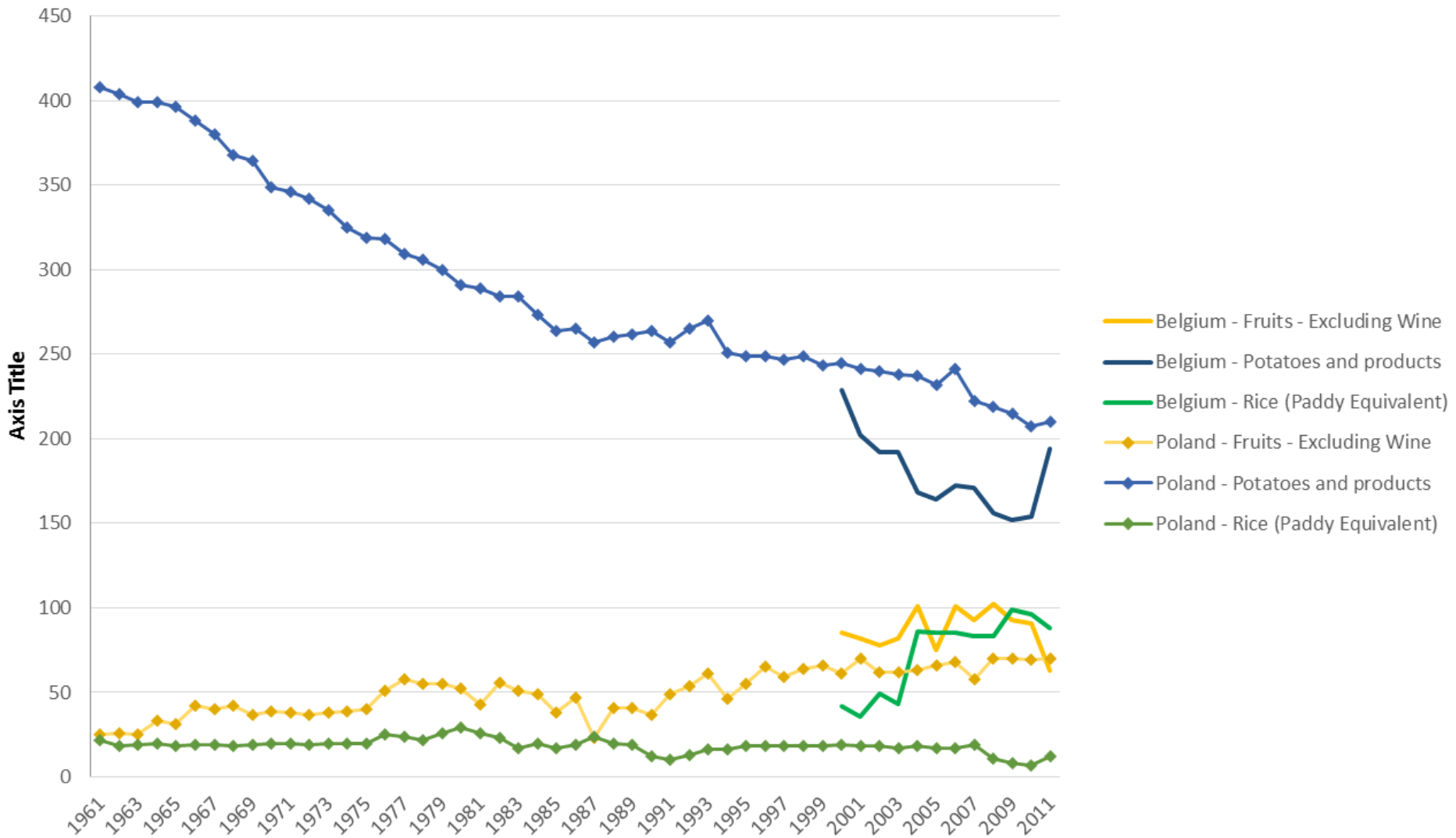


— France — Germany — Poland — Romania — Russian Federation — Belgium-Luxembourg — Belgique

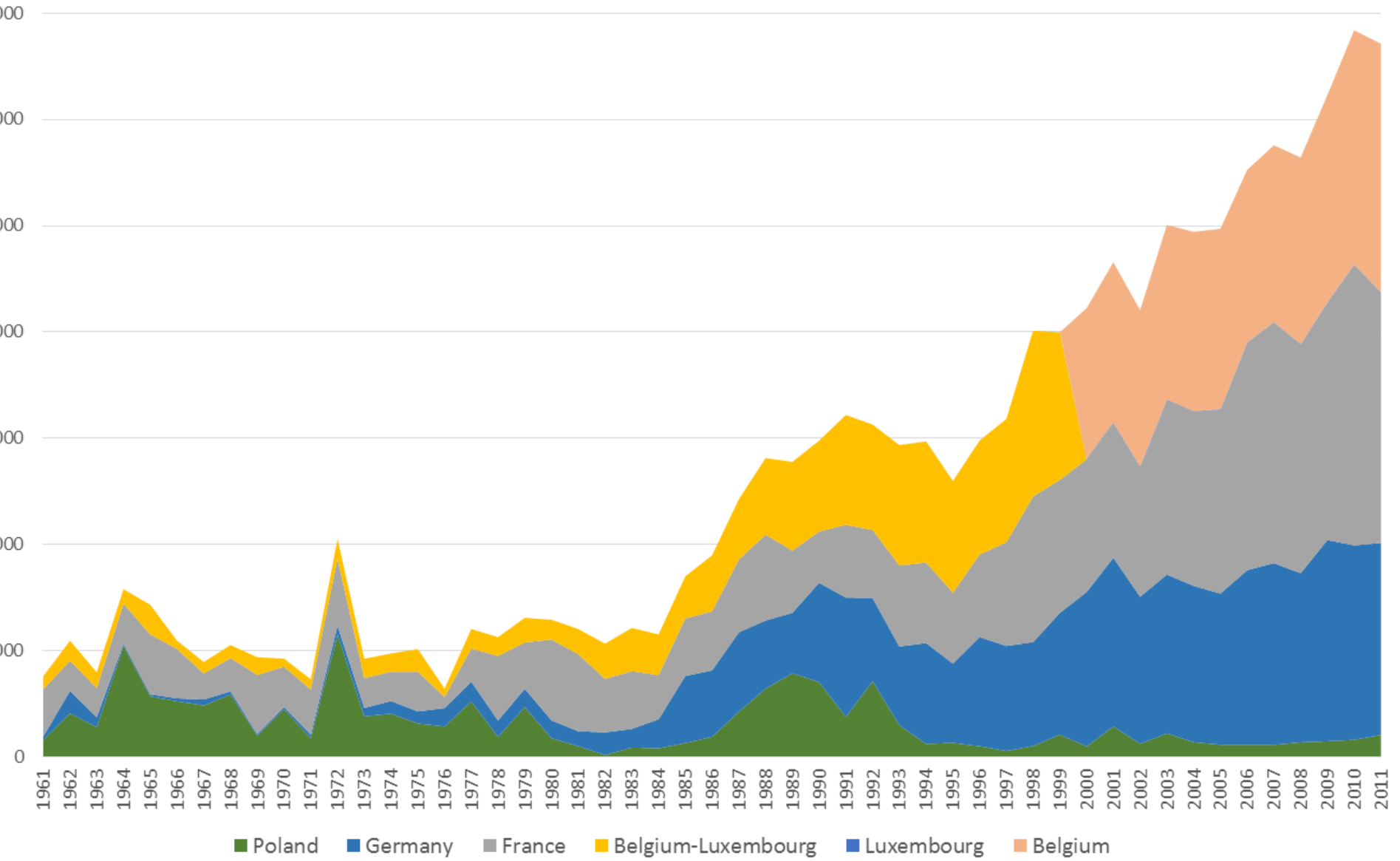
Area Harvested- Potatoes



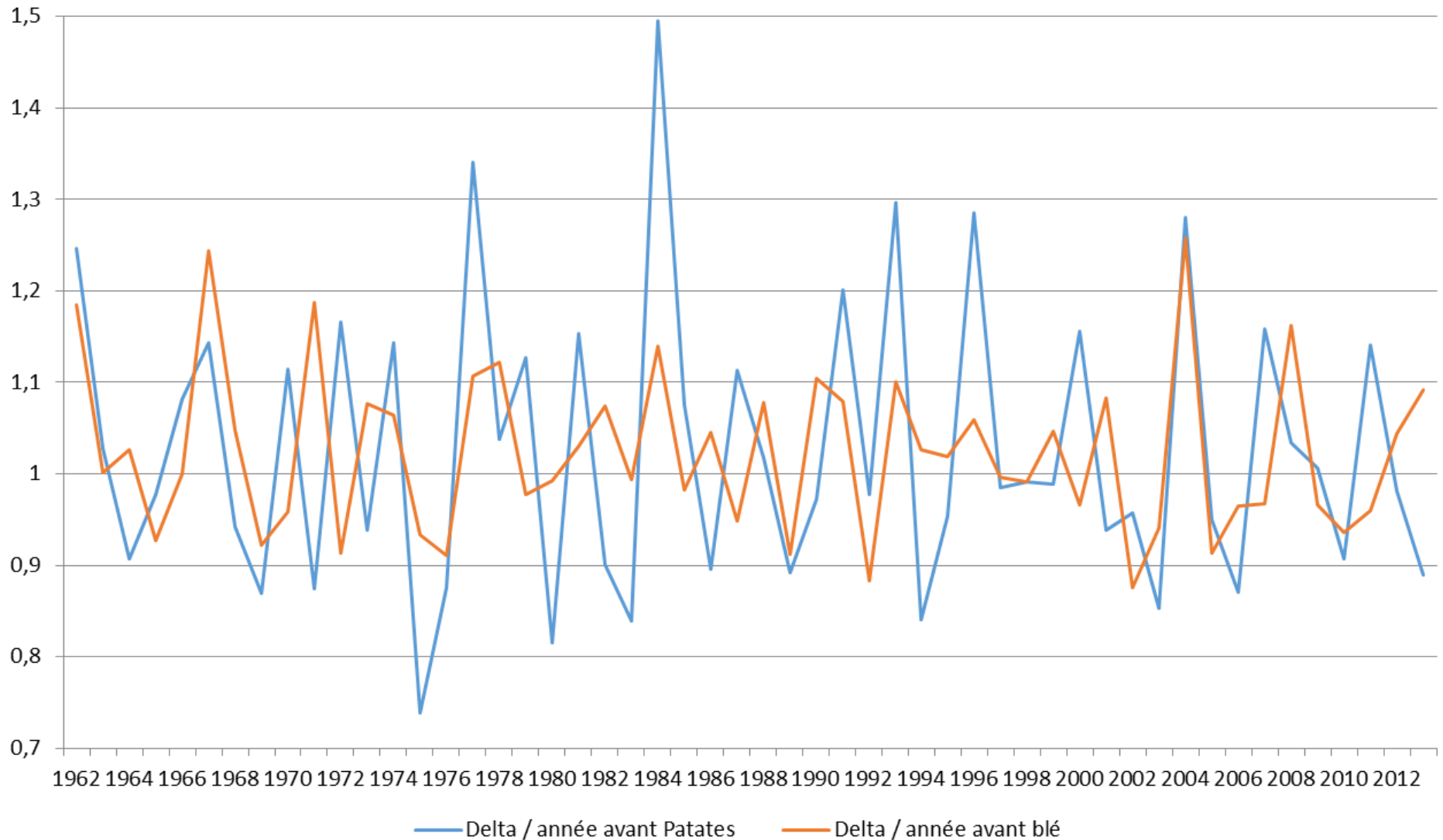
Food Supply (Kcal / capita / Day) Potatos / Fruits / Rice



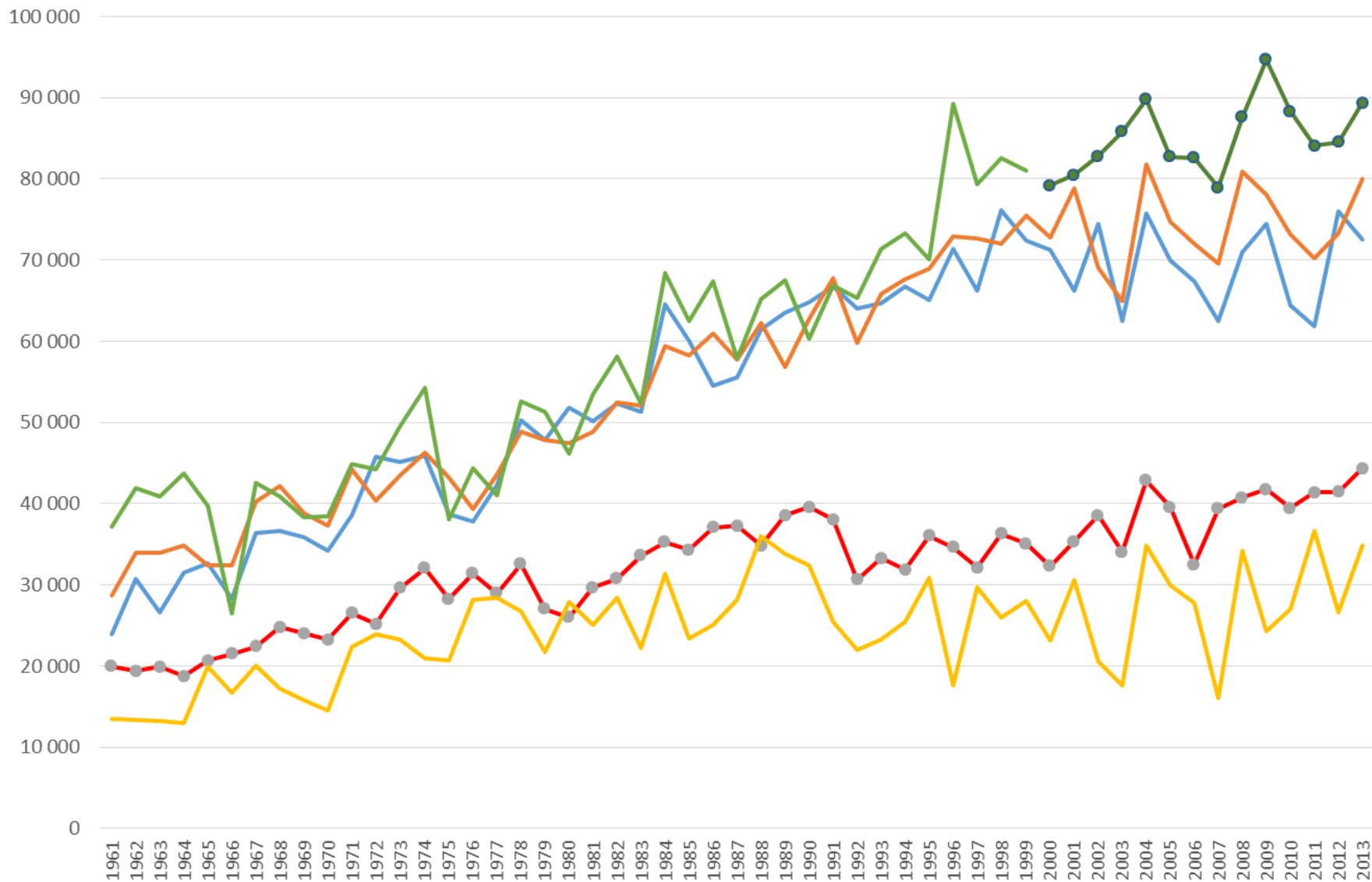
Exportation de patates (belgique, allemagne, pologne, france)



Delta of yield / year before. Potato and Weath, Germany

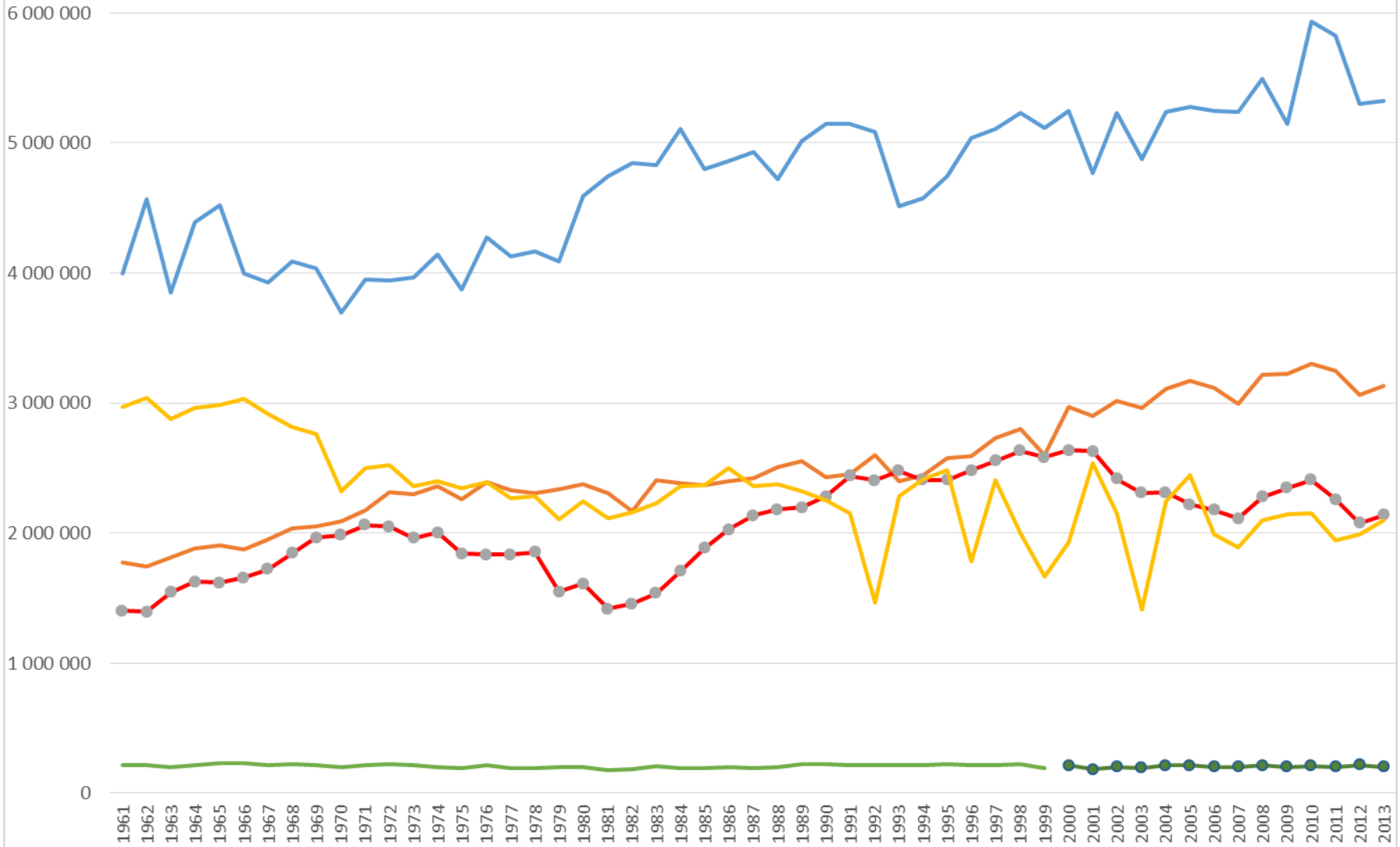


Yield- Wheat



— France — Germany —●— Poland — Romania — Belgium-Luxembourg —●— Belgique

Area Harvested- Wheat



— France — Germany —●— Poland — Romania — Belgium-Luxembourg —●— Belgique

Varieties catalogue NB inscriptions / FR

